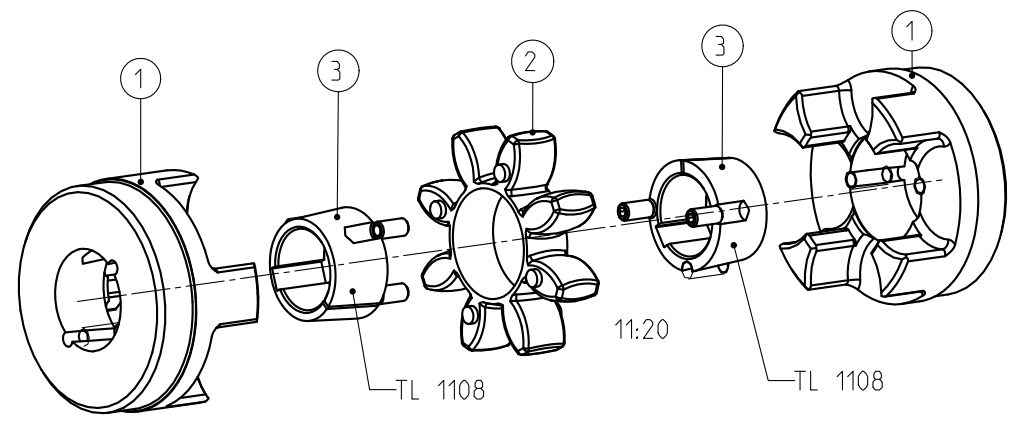



Drehmoment / Torque
 Zahnkranz / spider 92 Sh A T-PUR
 (Zahnkranz / spider 92 Sh A)
 $T_{KN} = 190 \text{ Nm}$
 $T_{Kmax} = 380 \text{ Nm}$

Massenträgheitsmoment / Mass moment of inertia
 $J_{ges.} = 0.001542 \text{ kgm}^2$

Schraubenanzugsmoment Teil 3- 1/4" BSW , $T_A = 5.7 \text{ Nm}$
 screw tightening torque part 3- 1/4" BSW , $T_A = 5.7 \text{ Nm}$



Teil 3 = Taper-Klemmbuchse 1108, Passfedernute n. DIN 6885 Bl.1 (*Ø28H7 n. DIN 6885 Bl.3)
 part 3 = Taper clamping bush 1108, Keyway acc. to DIN 6885 sh. 1 (*Ø28H7 acc. to DIN 6885 sh. 3)

| | | | | | |
|--|-----------------------|--|--|----------------------------|-----------------|
| Oberflächengüte nach DIN ISO 1302 Reihe 2 Surface quality acc. to DIN ISO 1302 line 2 | | Schutzvermerk ISO 16016 beachten Note protection mark acc. to ISO 16016 | | | |
| Allgemeintoleranzen nach DIN ISO 2768 - mH General tolerances acc. to DIN ISO 2768- | | Masstab Scale | 1:1 | Format DIN Size | A3 |
| ROTEX 38 TB1/1 Taper-Klemm Standard | | |  KTR-Kupplungstechnik GmbH D-48407 Rheine | | |
| gezeichnet drawn | Werkstoff Material | Teilnummer Part number | Kz | Lfd.-Nr. Current number | Index Change |
| Datum 07.02.12 | DIN | | M | 422502 | 1 |
| Name SCHP | Gewicht Weight | 1.678 | | | |